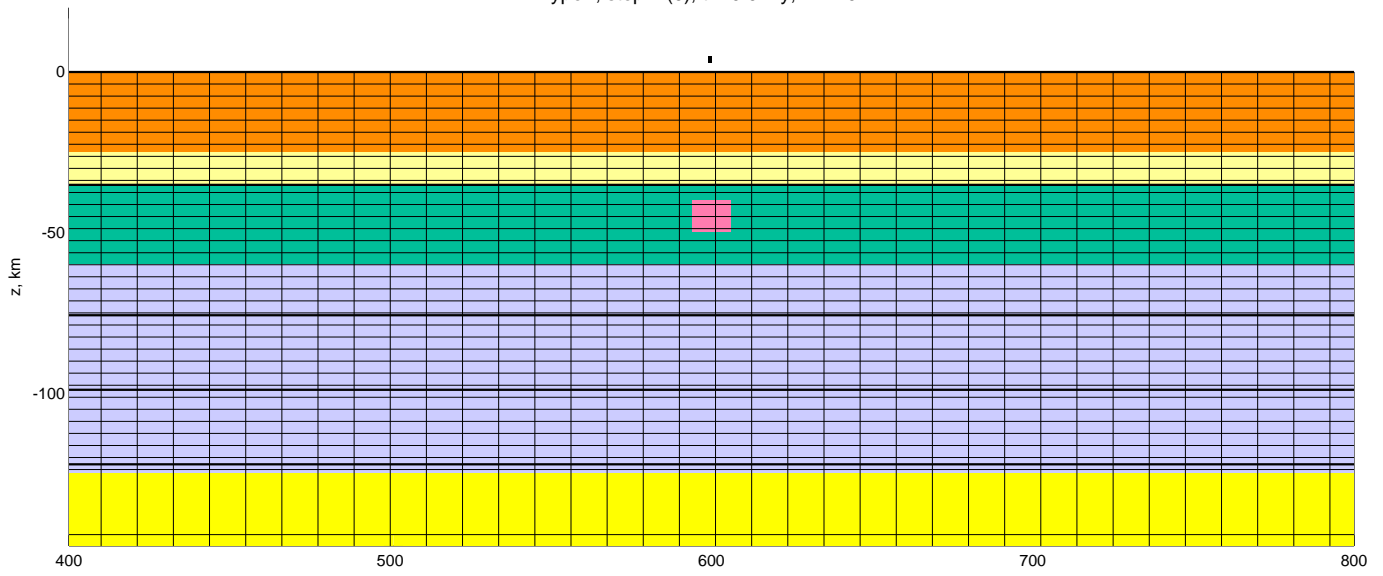
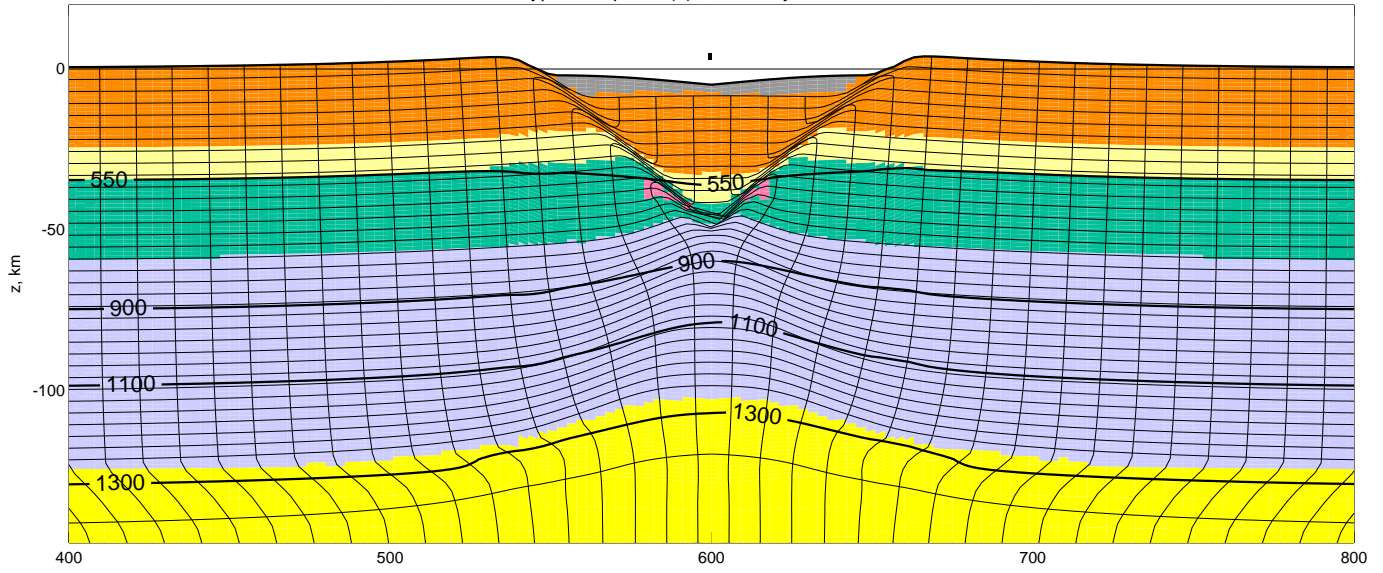


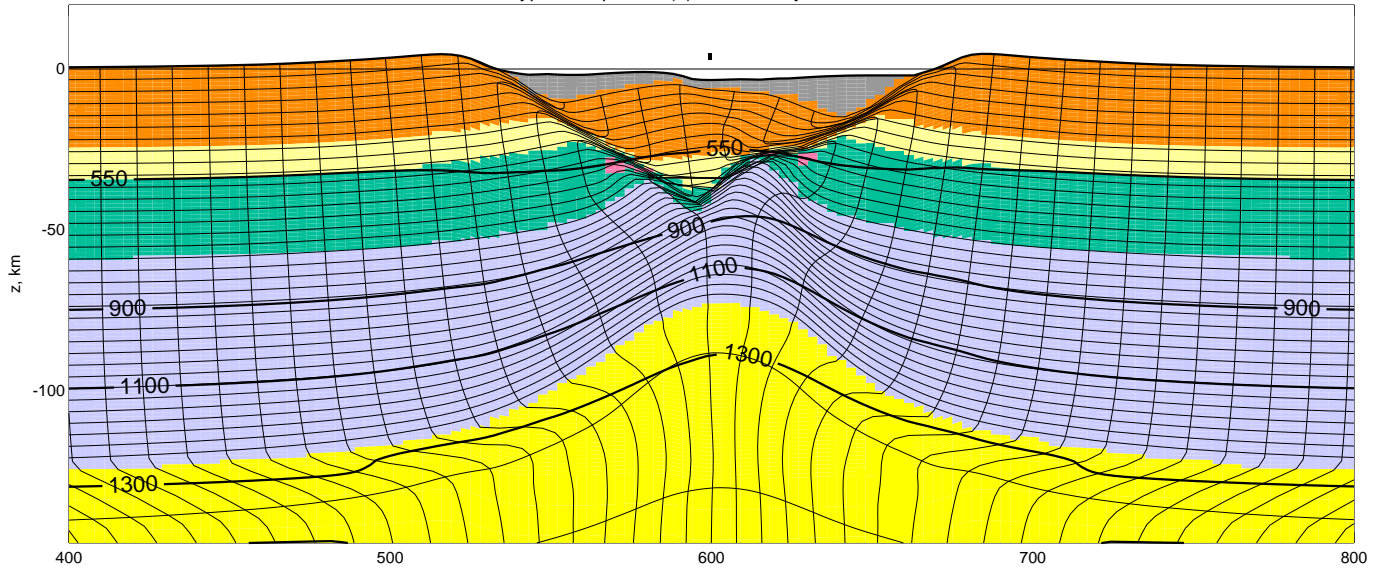
Type-I, step 1 (0), $t = 0.0 \text{ My}$, $\Delta x = 0 \text{ km}$



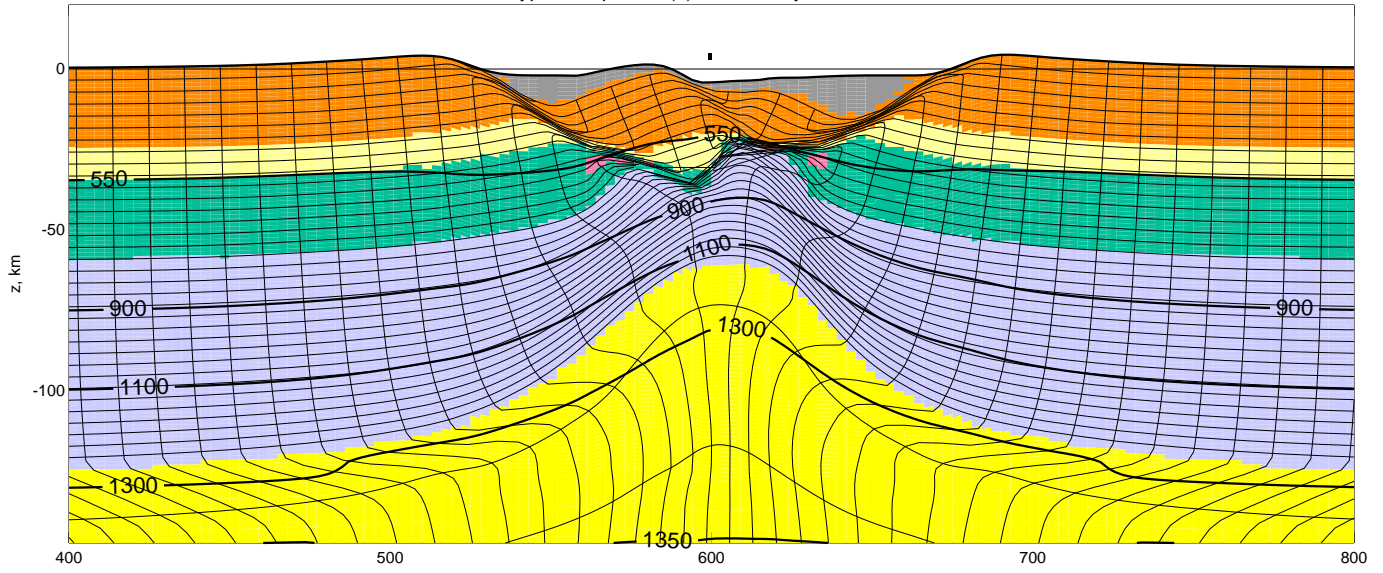
Type-I, step 800 (4), t = 8.0 My, $\Delta x = -40\text{km}$



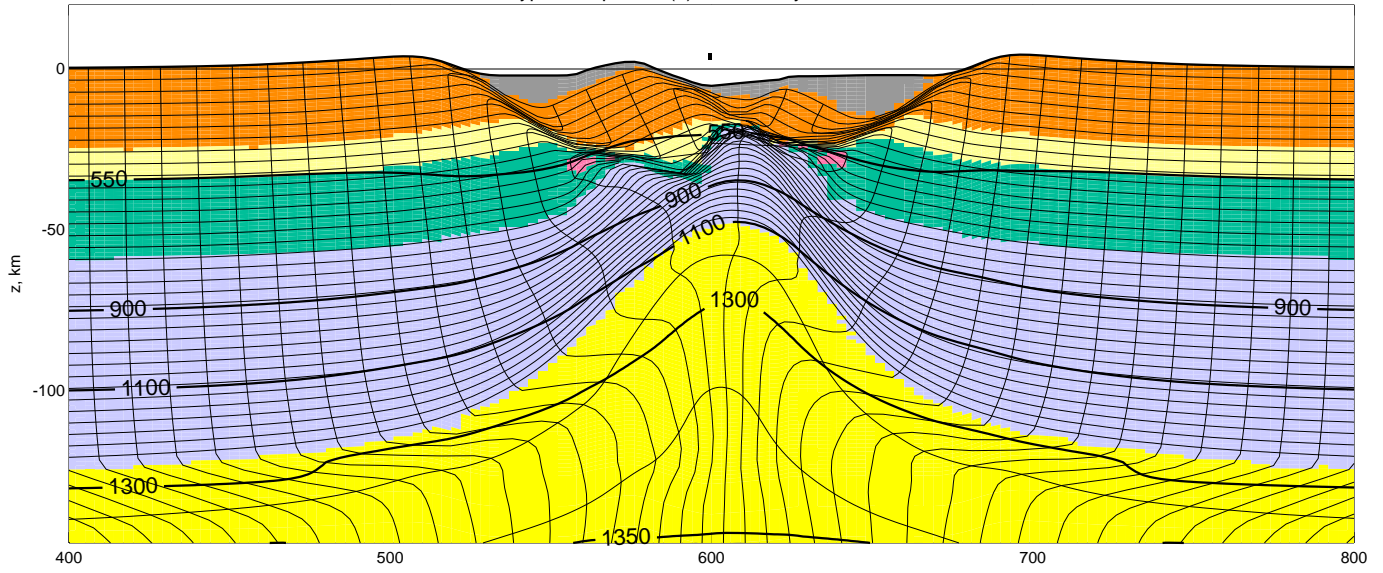
Type-I, step 1400 (7), t = 14.0 My, $\Delta x = -70\text{km}$



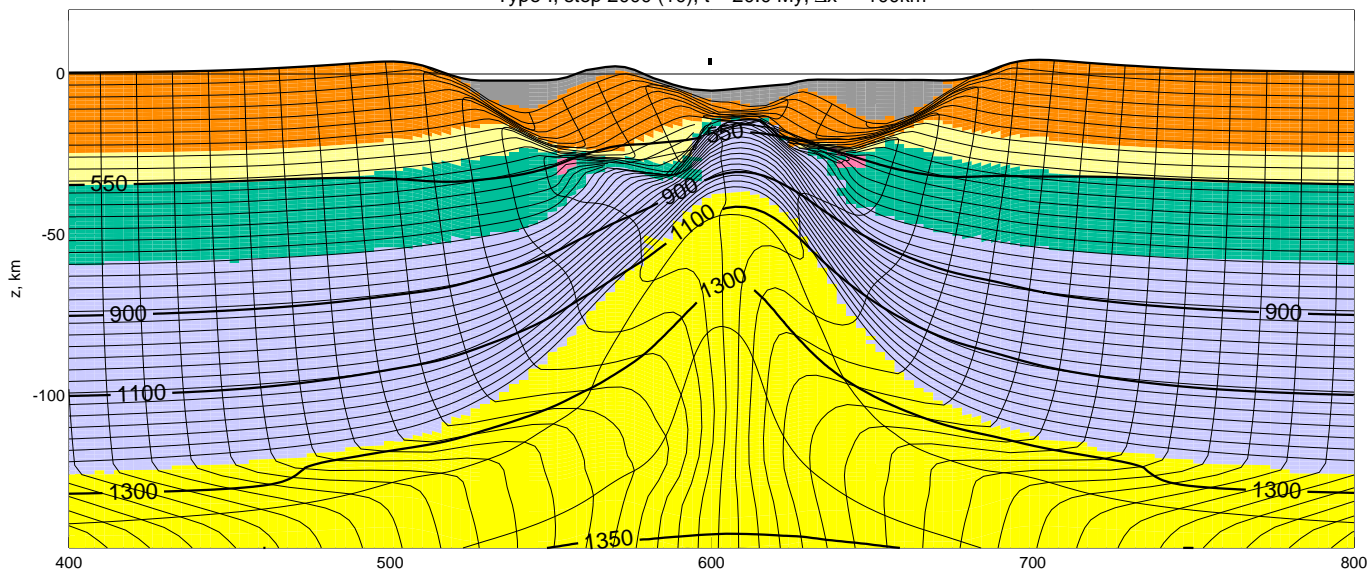
Type-I, step 1600 (8), t = 16.0 My, $\Delta x = -80\text{km}$



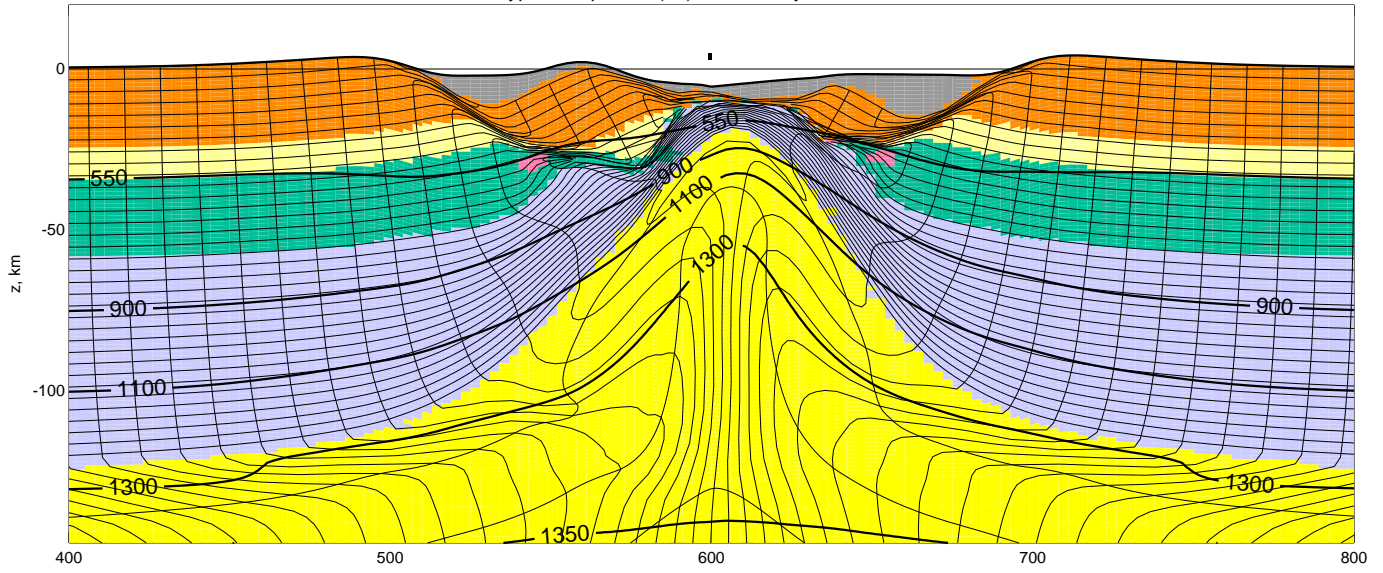
Type-I, step 1800 (9), t = 18.0 My, $\Delta x = -90\text{km}$



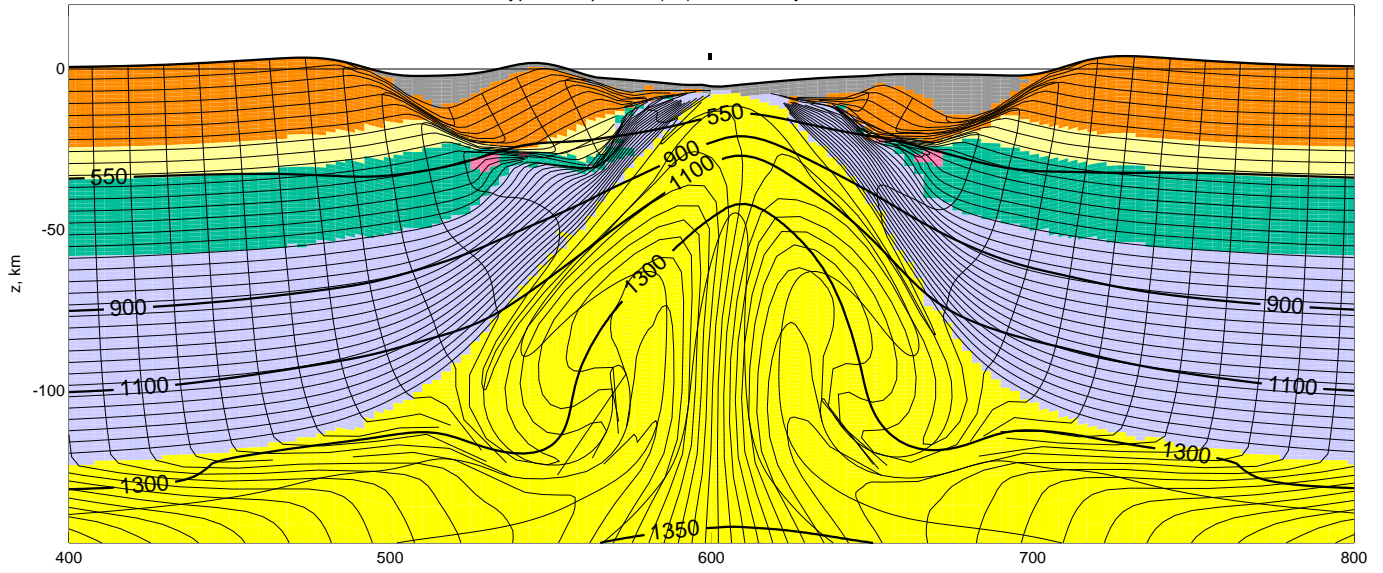
Type-I, step 2000 (10), t = 20.0 My, $\Delta x = -100\text{km}$



Type-I, step 2400 (12), t = 24.0 My, $\Delta x = -120\text{km}$



Type-I, step 3000 (15), t = 30.0 My, $\Delta x = -150\text{km}$



Type-I, step 5000 (25), t = 50.0 My, $\Delta x = -250\text{km}$

