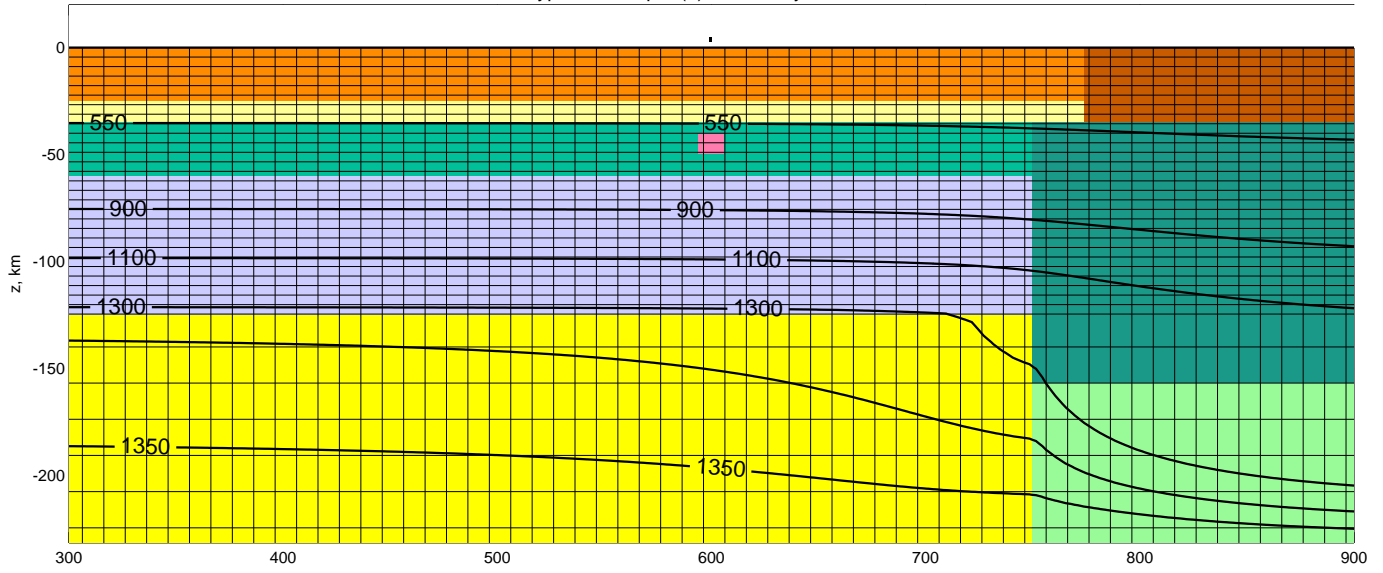
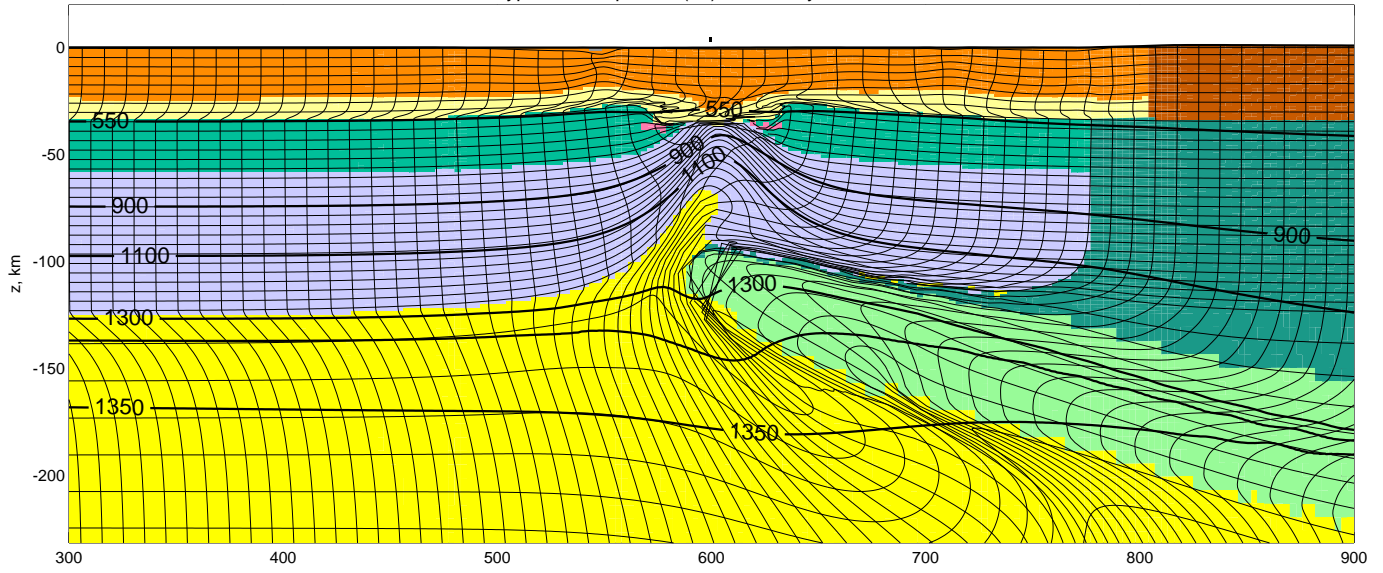


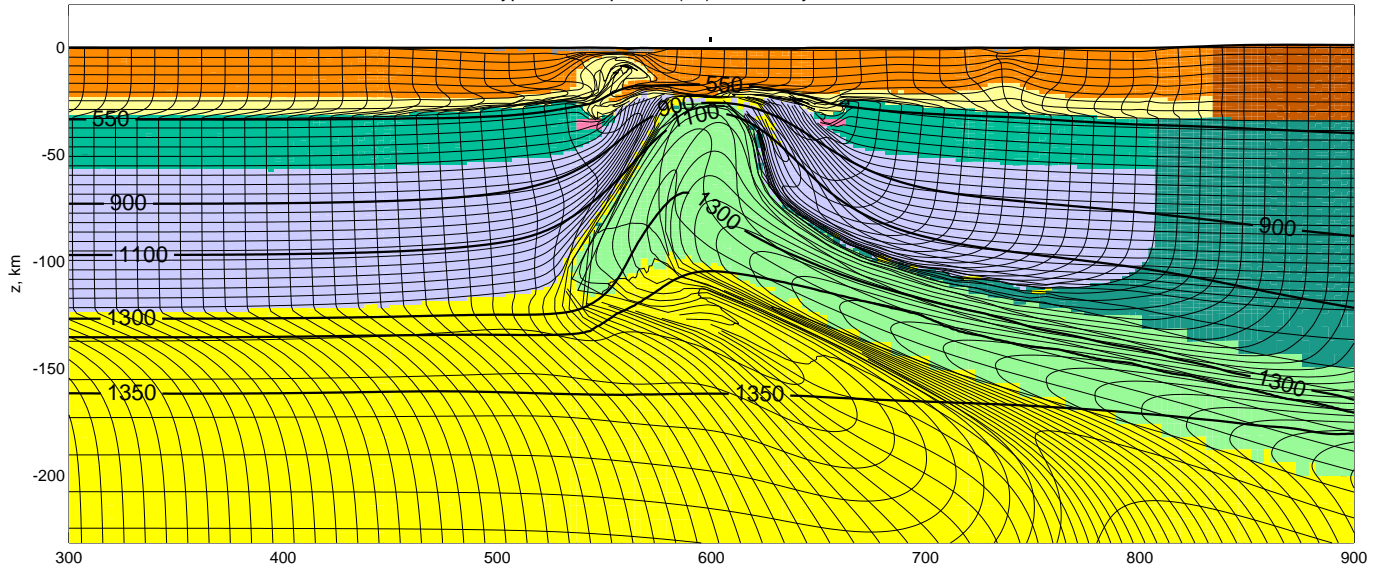
Type-II-C, step 1 (0), t = 0.0 My, $\Delta x = 0\text{km}$



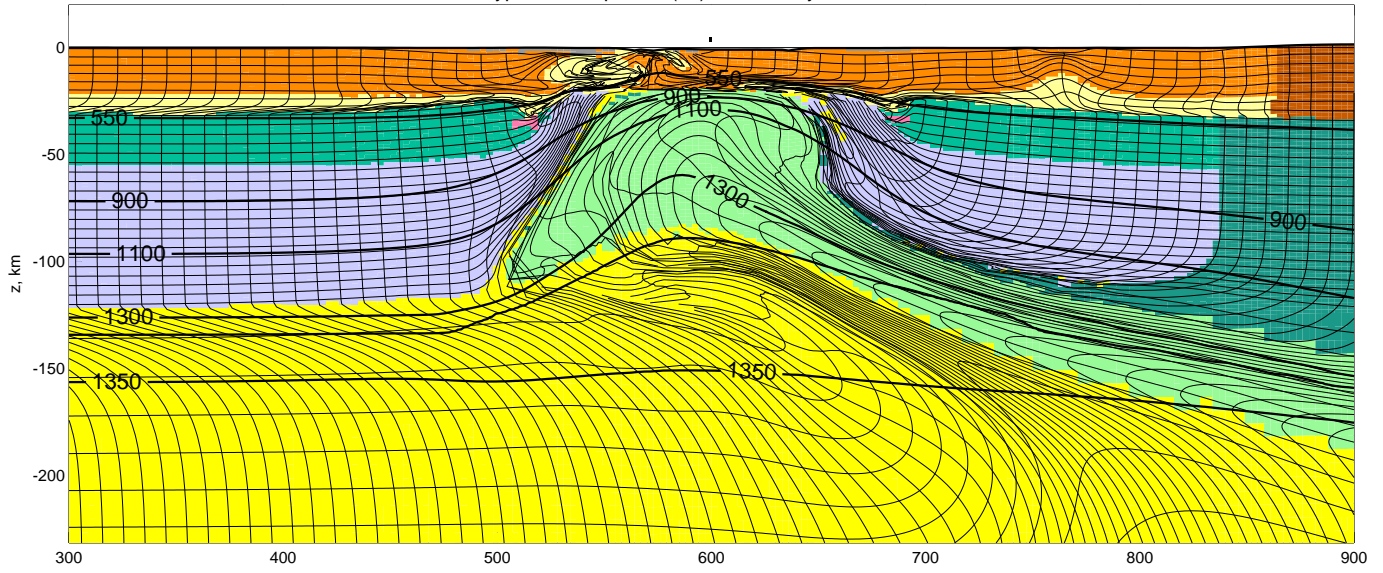
Type-II-C, step 2000 (10), $t = 4.0 \text{ My}$, $\Delta x = -60 \text{ km}$



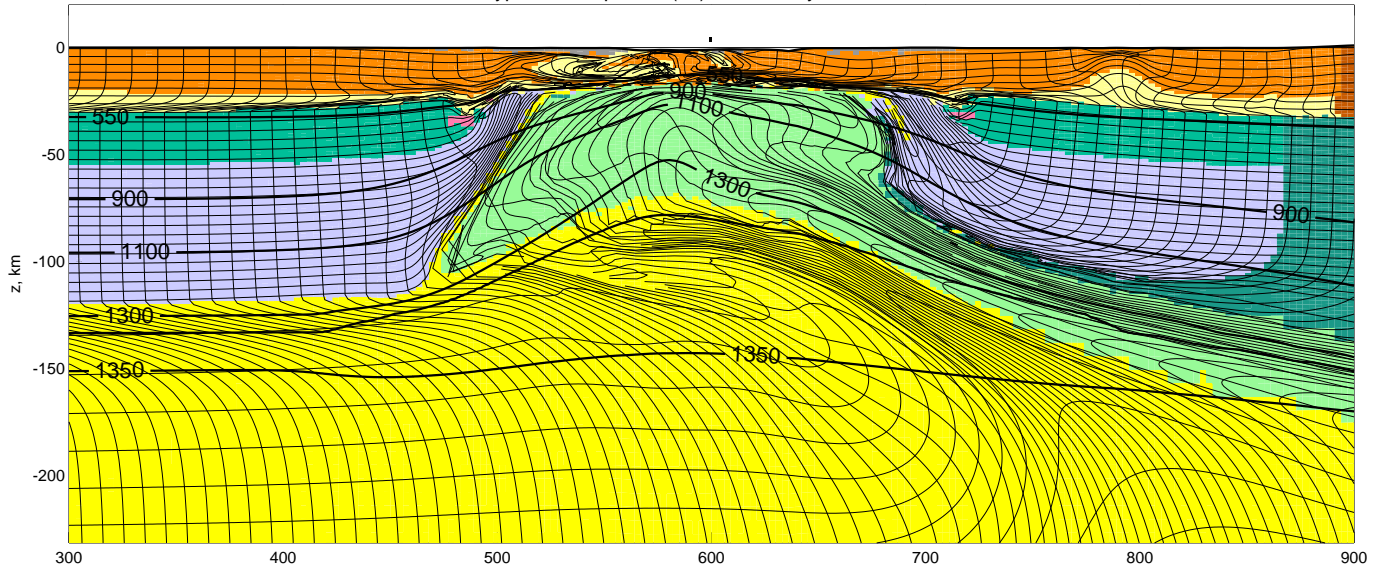
Type-II-C, step 4000 (20), t = 8.0 My, $\Delta x = -120\text{km}$



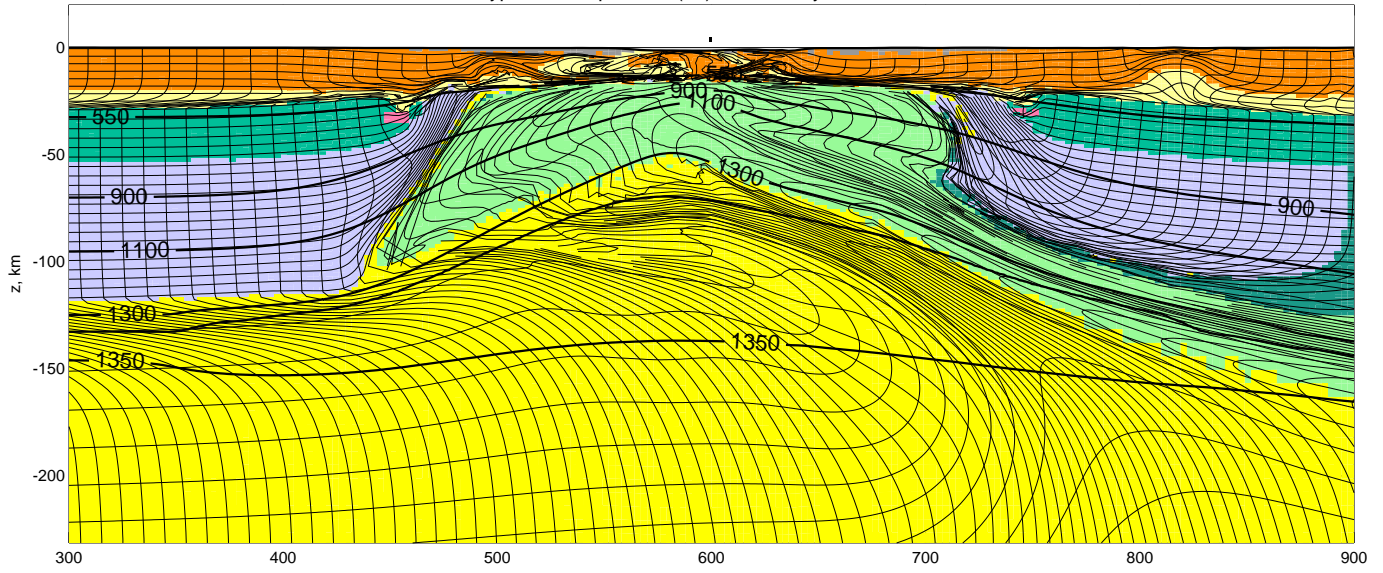
Type-II-C, step 6000 (30), t = 12.0 My, $\Delta x = -180\text{km}$



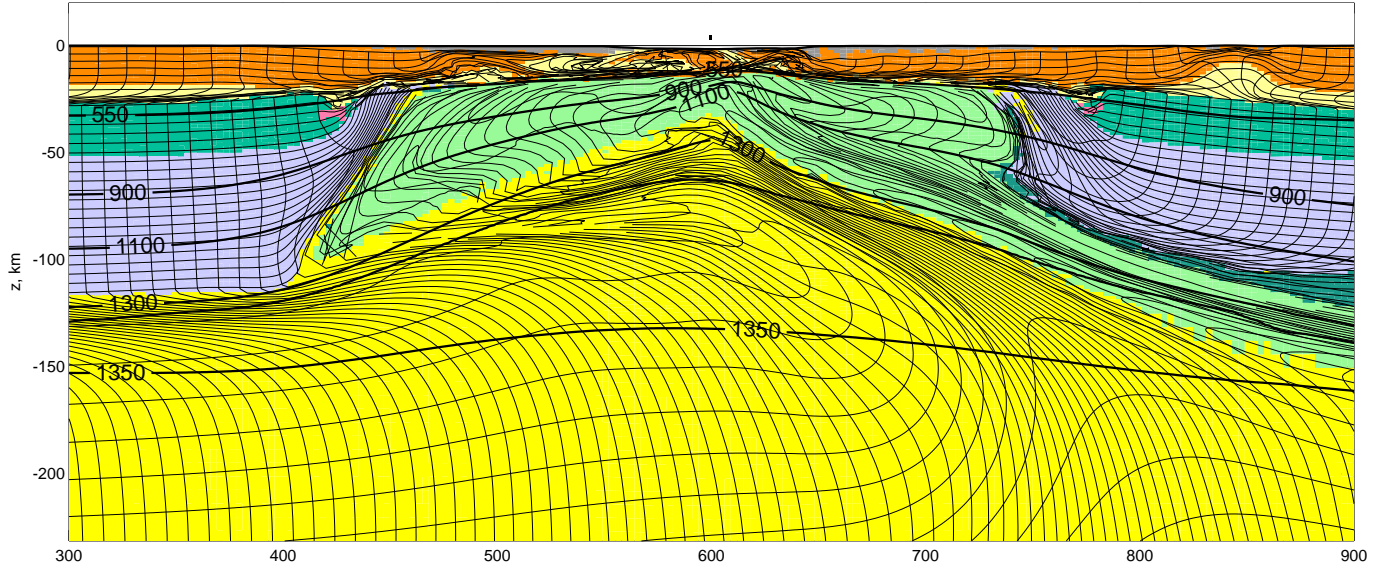
Type-II-C, step 8000 (40), t = 16.0 My, $\Delta x = -240\text{km}$



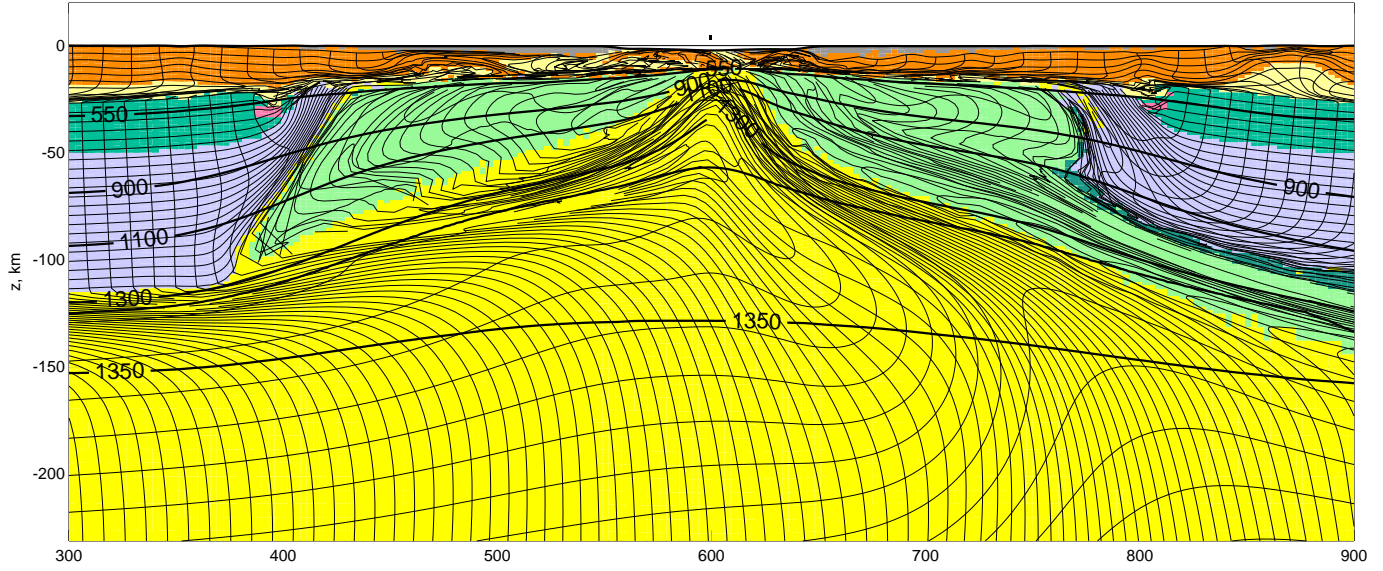
Type-II-C, step 10000 (50), t = 20.0 My, $\Delta x = -300\text{km}$



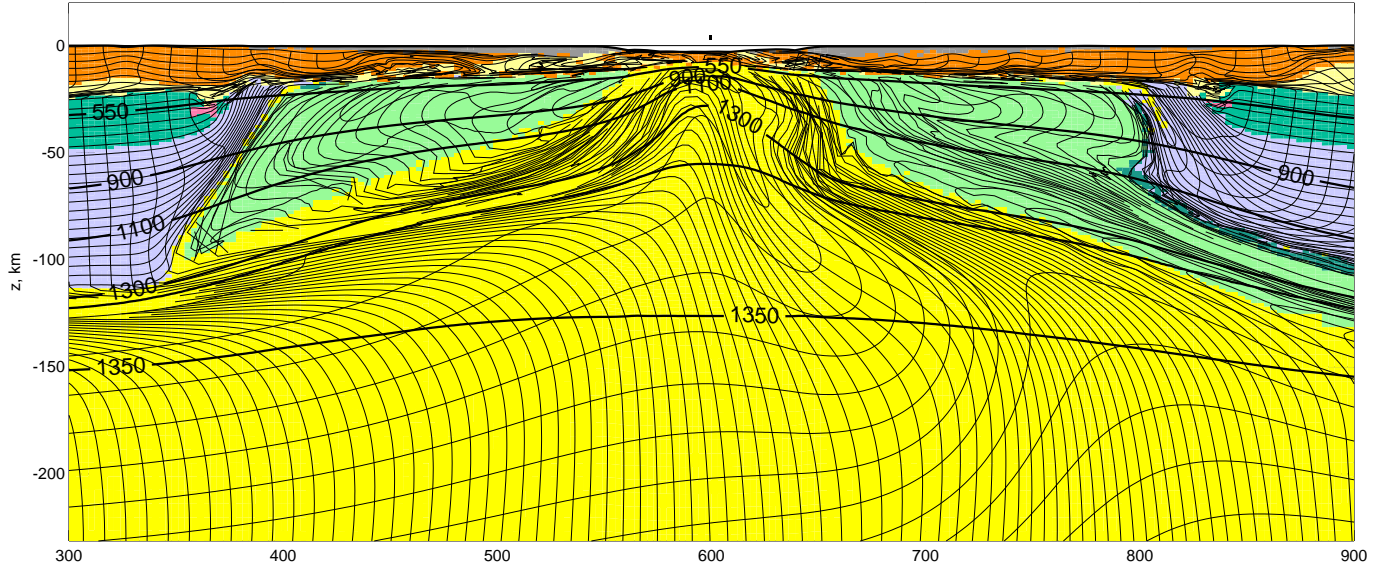
Type-II-C, step 12000 (60), t = 24.0 My, $\Delta x = -360\text{km}$



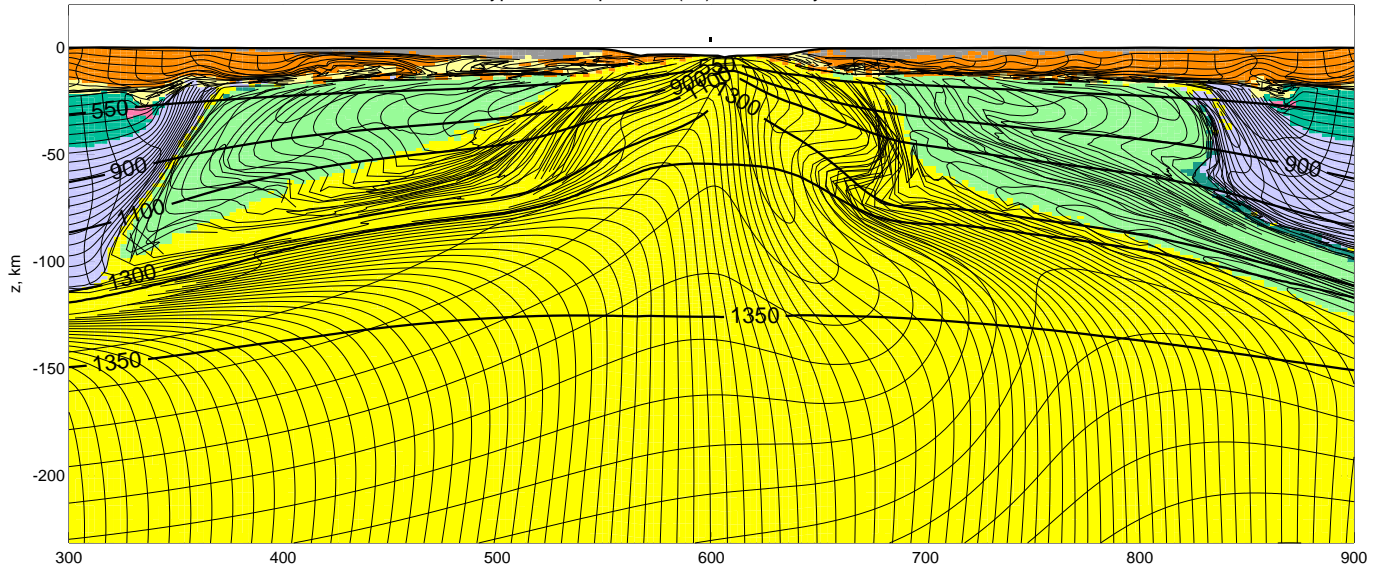
Type-II-C, step 14000 (70), t = 28.0 My, $\Delta x = -420\text{km}$



Type-II-C, step 16000 (80), t = 32.0 My, $\Delta x = -480\text{km}$



Type-II-C, step 18000 (90), t = 36.0 My, $\Delta x = -540\text{km}$



Type-II-C, step 19400 (97), t = 38.8 My, $\Delta x = -582\text{km}$

